



## **SRTL-11: Final ANNOUNCEMENT**

### **New ways of interacting with data, context and chance in statistical modelling processes**

Dear SRTL friends,

We are happy to email you the latest information about the SRTL-11 meeting. We look forward to your participation and hope that the following information will help you in preparing for this gathering.

In this final announcement we provide information about:

- General information (Sponsors, SRTL11 Scientific committee, Local Organizing Committee, Venue)
- Information for your arrival and departure in Los Angeles International Airport
- SRTL-11 invited participants
- SRTL-11 schedule
- Instructions for discussants
- Presentation format
- Google drive information
- Publication
- Travel guide: Climate, clothing, electricity, currency, weights & measures, insurance, tax and tipping, time, and visas

Note: we will NOT provide hard copies of any readings, unless you make a special request. We assume most will review materials on their computers or mobile devices.

Wishing you safe and stress-free travel,

Katie Makar

Dani Ben-Zvi

Rob Gould

Linda Zanontian

*Co-chair*

k.makar@uq.edu.au

*Co-chair*

dbenzvi@univ.haifa.ac.il

*Local Organizer*

rgould@stat.ucla.edu

*Local Organizer*

linda@stat.ucla.edu



## SPONSORS

A sincere thank you to the sponsors who have helped to make the Research Forum possible:

- UCLA Department of Statistics
- ASA Section on Statistics Education
- IASE
- Springer

## SRTL-11 SCIENTIFIC PROGRAM COMMITTEE

By reviewing the proposed papers, the members of the Scientific Program Committee have helped to shape the scientific program of SRTL-11.

- Janet Ainley – University of Leicester, UK
- Dani Ben-Zvi – University of Haifa, Israel
- Rob Gould – University of California, Los Angeles, USA
- Sibel Kazak – Pamukkale University, Turkey
- Katie Makar – The University of Queensland, Australia
- Jennifer Noll – TERC, USA
- Maxine Pfannkuch – The University of Auckland, New Zealand
- Andee Rubin – TERC, USA

## LOCAL ORGANIZING COMMITTEE

Robert Gould Dept. of Statistics University of California, Los Angeles 8117 Math Sciences Bldg, UCLA Los Angeles, CA 90095-1554 USA	Linda Zanontian Dept. of Statistics University of California, Los Angeles 8117 Math Sciences Bldg, UCLA Los Angeles, CA 90095-1554 USA
--	---

### Local Organizing Committee roles:

Excursions, hotel accommodation, transport, registration, etc.: **Ask Linda, [linda@stat.ucla.edu](mailto:linda@stat.ucla.edu)**

Submitting papers, conference proceedings: **Ask Rob, [rgould@stat.ucla.edu](mailto:rgould@stat.ucla.edu)**

Anything else: **Ask Rob**



## VENUE AND ACCOMODATION

We will be staying in the **student dorms** on the UCLA campus. The dorms are "transformed" to hotel-style, single-occupancy rooms (unless you request a double) and are simple but comfortable, with wifi, air conditioning, and private *en suite* toilets and showers. Breakfasts will be in the dorms, and all other meals at the meeting site or at a restaurant. Accompanying persons will need to visit the meeting site for meals. Your room will have three beds in it for reasons that I can't fully understand despite multiple enquiries to learn more. Rest assured that you will NOT be sharing the room, despite the existence of two extra beds.

During your stay you will have access to the Sunset Canyon Recreation Center (50m and 25m pools, including diving wells, 6 tennis courts. Reservations may be required for tennis and volleyball courts) and the John Wooden Center gym (basketball courts, volleyball, badminton, weight training, stretching mats, cardio equipment, handball, racquetball and squash (reservations required), rock wall. <https://www.recreation.ucla.edu/Facilities/All-Facilities>

Our meetings and lunch will be held in the **UCLA botanical gardens**, roughly a 1 mile (1.6km) walk from the dorms. The walk is hilly (particularly the return walk, which involves one long, steep hill), so comfortable shoes are necessary! On request, we will arrange a car for those who do not wish to, or cannot, walk.

Campus maps are available here: <http://map.ucla.edu/downloads/>. A hard-copy will be provided on arrival. The lodging is in grid C3 in the map referred to in the link (also see the maps at the end of this document). ("Sunset Village"—the Olympic Village for the 1984 Olympics and for the future 2028 Olympics), and the meetings will be in the La Kretz Garden Pavilion in F6. In addition, we will have some of our dinners at the Luskin Conference Center (D5 on the map) which is half-way between the two locations. (Incidentally, the Luskin has a nice bar.)

### Transportation

Please let us know your arrival and departure airlines and times so that we can arrange your airport transfer. Plan to depart and arrive from LAX. If you insist on your own transportation, taxis from the airport to the lodging will be approximately \$60 USD plus a tip (traditionally 15%-20%). Note that the "LAX FlyAway" bus mentioned in the earlier announcement has been discontinued. Travel time is typically 45 minutes. The standard deviation on Saturdays and Sundays is relatively small, let us say about 10 minutes. However, the distribution is right-skewed.

### Excursions

We will have two long and one short excursion. On Tuesday, we will tour Warner Bros. Studios, a historic movie studio about 20 miles from UCLA. (Note that earlier we said we would tour



Sony Studios but, after some investigation, we decided this tour was dull and so are touring a different studio.) After our tour, we will have dinner in the heart of Hollywood, near the "historic" intersection of Hollywood and Vine. On Wednesday afternoon we will visit the beachside city of Santa Monica, where you will have the option of renting a bike (included) for a self-guided ride along the coast, or spend time walking and shopping along the Third Street Promenade and the Pacific Park on the Santa Monica pier. We will meet together again at the end of the afternoon for dinner at El Cholo, a restaurant with deep roots in Los Angeles. A brief visit to the Getty Center museum (which is about 2 miles from campus) is also planned just before our farewell dinner in Westwood Village.

In addition to these planned excursions, you will have the opportunity for a guided tour of the UCLA botanical gardens and a visit to the "birthplace of the internet".

### Invited Participants

The list of delegates at the time of publication is:

First Name	Last Name	Country	Role
Dani	Ben-Zvi	Israel	Co-author, Sci. Committee, SRTL Co-chair
Rolf	Biehler	Germany	Presenter
Bob	delMas	USA	Discussant
Michal	Dvir	Israel	Presenter
Tim	Erickson	USA	Discussant
Anna	Fergusson	New Zealand	Presenter
Daniel	Frischemeier	Germany	Presenter
Rob	Gould	USA	Sci. Committee, Organizing Committee
Michael	Huberty	USA	Presenter
Sibel	Kazak	Turkey	Presenter, Sci. Committee
Dana	Kirin	USA	Co-author
Frauke	Kreuter	Germany/USA	Keynote
Katie	Makar	Australia	Sci. Committee, SRTL Co-chair
Jan	Mokros	USA	Co-presenter
Jennifer	Noll	USA	Presenter, Sci. Committee
Anne	Patel	New Zealand	Presenter
Maxine	Pfannkuch	New Zealand	Co-author, Sci. Committee
Andee	Rubin	USA	Presenter, Sci. Committee
Rebecca	Shareff	USA	Co-author
Susanne	Schnell	Germany	Co-presenter
Marianne	van Dijke	The Netherlands	Presenter
Michelle	Wilkerson	USA	Presenter
Linda	Zanontian	USA	Organizing Committee
Lucia	Zapata	Colombia	Presenter



Andy	Zieffler	USA	Co-author
------	----------	-----	-----------

## THE SCIENTIFIC PROGRAMME

The program will begin at 5pm on Sunday July 14 with the keynote address in Sunset Village. A welcome reception will precede the keynote at 4pm. The program will end at 1pm on Saturday, July 20. All participants are expected to attend all sessions.

The working language of the Research Forum is English, all electronic communication will be in English, all sessions will be conducted in English, and all written materials produced will be in English. Keep in mind though that for many participants **English is not their first language**. Please speak slowly and clearly.

All participants will be able to download the papers by June 21, 2019 from the shared Google Drive folder at [https://bit.ly/SRTL\\_Papers](https://bit.ly/SRTL_Papers) so that they can be read before attending the Forum. During the Forum we shall use Google Drive at [https://bit.ly/SRTL\\_Papers](https://bit.ly/SRTL_Papers) to share materials (presentations, videos, transcripts, meeting summaries, photos, etc.). The activities of the scientific program include:

- Keynote address on opening night (60 min).
- Research presentations to the entire group. There will be long presentations (90 min) and short presentations (45 min). Each presenter, or team of presenters, will be allocated 90 or 45 minutes, which includes interactive whole group discussion and a small subset of video clips (up to 3 min.), if desired.
- Small group discussion around each cluster's thematic topic (1 hour).
- Short opening session each day for reflection on the presentations and discussions of the previous day (30 minutes).
- Optional afternoon interactive meeting/s devoted to viewing and discussing research using video data, or sharing other projects of the participants (60 min.).
- Panel presentation by discussants (90 minutes) on closing day.
- Looking backward looking forward summary session on closing day (2 hrs).

### Presentations

The main meeting room is equipped with overhead projection, speakers for hearing video files, and internet access. We will provide a Mac laptop. The Mac can display Powerpoint, Keynote and pdf files. For video files, only these formats will work: .mov, .mp4, .m4v, MPEG-1, 3GPP. Please provide your presentation on a thumb drive/memory stick to the organizer the day before your presentation.

Presenters can also use their own laptop. Connection to the projector is both VGA or HDMI. We will have several adaptors for Macs, but please bring your own if you have it.




## Conference Schedule (Subject to change)

### Day 1: Sunday, 14 July

Time	Activity	Location
Before 2pm	Transfer from LAX to UCLA	
1pm – 2pm	Lunch	UCLA Dining Hall
2pm	Check-in	UCLA Sproul Hall, 350 De Neve Dr., Los Angeles, CA 90095. (Phone: 310-825-2075).
2pm – 4pm	Free Time	We will have some access (to be determined) to UCLA recreational facilities, including a pool. <a href="https://www.recreation.ucla.edu/Facilities/All-Facilities">https://www.recreation.ucla.edu/Facilities/All-Facilities</a>
4pm – 5pm	Welcome Reception	Sunset Village Courtyard
5pm – 6pm	Keynote Address	Sunset Village Courtside Lounge (7th floor)
7pm – 8:30pm	Dinner	Plateia Restaurant, Luskin Conf. Center <a href="http://plateia UCLA.com/">http://plateia UCLA.com/</a>

### Day 2: Monday, 15 July

Time	Activity	Location
7am – 8:30am	Breakfast and walk	UCLA Dining Hall
8:30am – 9am	Reflection	LaKretz Garden Pavilion (LKGP)  Located in the Mildred E. Mathias Botanical Garden <a href="https://www.botgard.ucla.edu/">https://www.botgard.ucla.edu/</a>
9am – 10:30am	<b>Long Presentation 1:</b> Michal Dvir and Dani Ben-Zvi. <i>The double-edged sword of conjecturing in the context of informal statistical modelling across two worlds of inquiry</i>	LKGP
10:30am – 11am	Morning Coffee	LKGP
11am – 12:30pm	<b>Long Presentation 2:</b> Daniel Frischemeier and Susanne Schnell. <i>Telling</i>	LKGP



	<i>data stories in primary school - Dealing with conflicting evidence.</i>	
<b>12:30pm – 2:00pm</b>	Lunch	LKGP
<b>2:00pm – 2:45pm</b>	<b>Short Presentation 1:</b> Andrew Zieffler, Michael Huberty, Robert delMas, and Nicolas Justice. <i>From probabilistic to algorithmic modeling (and back): a case study of secondary teachers.</i>	LKGP
<b>2:45pm – 3:45pm</b>	Small group discussions	LKGP and surroundings
<b>3:45pm – 4:15pm</b>	Afternoon Coffee	LKGP
<b>4:30pm – 5:30pm</b>	Optional Sessions	LKGP
<b>6:00pm – 7:30pm</b>	Dinner	Taco Truck at LKGP. Taco trucks are a major cultural force in L.A.

### Day 3: Tuesday, July 16

Time	Activity	Location
<b>7am – 8:30 am</b>	Breakfast and walk	UCLA Dining Hall
<b>8:30am-9am</b>	Reflection	LKGP
<b>9:00am-9:45am</b>	<b>Short Presentation 2:</b> Marianne van Dijk-Droogers, Paul Drijvers and Arthur Bakker. <i>Viewing statistical modeling processes through the lens of instrumental genesis.</i>	LKGP
<b>9:45am – 10:30am</b>	<b>Short Presentation 3:</b> Sibel Kazak, Taro Fujita and Manoli Pifarre Turmo. <i>Developing students' data analytics skills through modeling.</i>	LKGP
<b>10:30am – 11:00am</b>	Coffee	LKGP
<b>11:00am – 12:00pm</b>	Small group discussions	LKGP
<b>12:00pm – 12:30pm</b>	Lunch	LKGP (collect boxed lunch)
<b>12:30pm – 2:00pm</b>	Bus leaves; travels to Warner Bros. Studios.	<a href="https://www.wbstudiotour.com">https://www.wbstudiotour.com</a>
<b>2:00pm – 5:30pm</b>	Tour	



5:30pm – 8:00pm	bus pick-up, take to dinner. Bus picks up at 8pm to return to UCLA.	Fabiolus Cucina <a href="http://www.fabiolus.com/">http://www.fabiolus.com/</a>
-----------------	--	--

#### Day 4: Wednesday, 17 July

Time	Activity	Location
7:00am – 8:30am	Breakfast and walk	UCLA Dining Hall
8:30am – 9:00am	Reflection	LKGP
9:00am – 10:30am	<b>Long Presentation 3:</b> Susanne Podworny and Rolf Biehler. <i>Understanding modeling processes through visual modeling.</i>	LKGP
10:30am – 11:00am	Morning Coffee	LKGP
11:00am – 11:45am	<b>Short Presentation 4:</b> Lucia Zapata-Cardona and Cindy Alejandra Martinez Castro. <i>Statistical modeling in teacher education.</i>	LKGP
11:45am – 12:45pm	Small Group discussions	LKGP
12:45pm – 1:30pm	Lunch	LKGP
1:30pm	Bus leaves for Santa Monica	LKGP
2:00pm – 5:30pm	Biking, walking	Santa Monica <a href="https://santamonicapier.org/">https://santamonicapier.org/</a> <a href="https://www.pacpark.com/the-park/rides/">https://www.pacpark.com/the-park/rides/</a> <a href="https://thebikecenter.com/santa-monica/#">https://thebikecenter.com/santa-monica/#</a>
5:30pm	Bus leaves for dinner	Santa Monica
6:00pm – 8:00pm	Dinner	El Cholo, Santa Monica <a href="http://elcholo.com/">http://elcholo.com/</a>

#### Day 5: Thursday, 18 July

Time	Activity	Location
7:00am – 8:30am	Breakfast and walk	UCLA Dining Hall
8:30am – 9:00am	Reflection	LKGP





9:00am – 10:30am	<b>Long Presentation 4:</b> Michelle Wilkerson, Rebecca Shareff, and Kathryn Lanouette. <i>Data repurposing as a site for exploring chance through the lens of statistical modelling.</i>	LKGP
10:30am – 11:00am	Morning Coffee	LKGP
11:00am – 12:30pm	<b>Long Presentation 5:</b> Anna-Marie Fergusson and Maxine Pfannkuch. <i>Introducing high school teachers to code-driven tools for the randomisation test.</i>	LKGP
12:30pm – 2:00pm	Lunch and guided tour of botanical garden	LKGP
2:00pm – 3:30pm	<b>Long Presentation 6:</b> Jennifer Noll, Dana Kirin, Jason Dolor, and Kit Clement. <i>Students' emerging statistical modeling stories as they invent and evaluate TinkerPlots models for comparing two groups.</i>	LKGP
3:30pm – 4:00pm	Afternoon Coffee	LKGP
4:00pm – 5:00pm	Small Group Discussion	LKGP
6:00pm – 7:30pm	Dinner	Plateia at Luskin Conference Center

**Day 6: Friday, 19 July**

Time	Activity	Location
7:00am – 8:00am	Breakfast and walk	UCLA Dining Hall
<b>Early start: 8:00am – 8:30am</b>	<b>Reflection</b>	<b>LKGP</b>
8:30am – 10am	<b>Long Presentation 7:</b> Anne Patel and Maxine Pfannkuch. <i>Building middle school students'</i>	LKGP



	<i>reasoning about chance and data through modelling.</i>	
10am – 10:30am	Morning Coffee	LKGP
10:30am – 12pm	<b>Long Presentation 8:</b> Andee Rubin and Jan Mokros. <i>Data modeling in the world of big data.</i>	LKGP
12:00pm – 1:00pm	Small group discussions	LKGP
1:00pm – 2:00pm	Lunch	LKGP
2:00pm-3:00pm	Optional Session 2	LKGP
3:00-5:30	Self-guided time: recreation, walk to Westwood Village, visit Hammer museum in Westwood Village. (Not a museum about hammers but, rather, named after Armand Hammer, a person.)	<a href="https://hammer.ucla.edu/">https://hammer.ucla.edu/</a>
5:30pm	Bus leaves for closing dinner in Westwood Village	Optional: walk. It is about a 30 minute walk, downhill.
6:00pm – 8:00pm	Closing dinner Bus returns at 8:30	Skylight Gardens in Westwood Village <a href="http://www.skylightgardens.com">www.skylightgardens.com</a>

### Day 7: Saturday, 20 July

Time	Activity	Location
7am – 8:30 am	Breakfast and walk	UCLA Dining Hall
8:30am – 9am	Reflection	LKGP
9:00am – 10:30am	Discussant's Panel	LKGP
10:30am – 11am	Morning Coffee	LKGP
11am – 1pm	Looking back and looking forward	LKGP
1pm – 2pm	Boxed Lunch and departures	

### INSTRUCTIONS FOR PRESENTERS

Summary papers must be uploaded to the SRTL-11 Google Drive Papers Folder at [https://bit.ly/SRTL\\_Papers](https://bit.ly/SRTL_Papers) (in either pdf or docx format) by May 10, 2019. Please name your paper with first author's family name e.g., Budgett.pdf.



See Guidelines for preparing papers below.

## INSTRUCTIONS FOR DISCUSSANTS

Discussants will actively participate in all sessions and discussions. In addition they will present/share their own reflections and comments on the Forum in a panel on the concluding day.

## PRESENTATION FORMAT

The scientific program groups presentations thematically into clusters. A cluster consists of:

- 2–3 presentations (long and short), combined with
- small group discussion (60 min), and
- reflection discussion (30 min on the following day).

This structure allows each presenter to share the details of their research with the entire group, and in addition, permits the entire group to process the research findings and substantively interact with the cluster topic.

**Long presentations** will be 90 minutes long: 60 min for presentation and 30 minutes for discussion (not necessarily as two blocks). Presenters of long presentations are encouraged to present short excerpts of video clips (up to 3 min., if available; please provide transcripts). All transcripts or other materials as needed for presentations will be in digital format. If presenters wish participants to have hard-copy handouts, then it is their responsibility to provide them at their session. Material will be uploaded to the SRTL-11 Google Drive Folder at [https://bit.ly/SRTL\\_Papers](https://bit.ly/SRTL_Papers). In the presentation, just a small subset of short research video will be presented, but presenters will have the opportunity to interact with video research data during two dedicated one-hour long sessions for this task (optional sessions). All presenters are requested to bring their video segments on a USB flash drive (bring several formats just in case one does not work) and upload them to the SRTL-11 Google Drive Folder at [https://bit.ly/SRTL\\_Papers](https://bit.ly/SRTL_Papers).

**Short presentations** will be 45 minutes long: 30 min for presentation and 15 minutes for discussion (not necessarily as two blocks). Presenters are requested to prepare their slides accordingly in a concise and clear format, and to include discussion questions. We assume there is little time for video clips, however if you wish to show one, please make sure it is about 1-3 minutes long, and provide a transcript. All materials should be uploaded to the designated Google Drive Folders at [https://bit.ly/SRTL\\_Papers](https://bit.ly/SRTL_Papers) (additional instructions will be provided in the final announcement).

## DOWNLOAD PAPERS

You are strongly encouraged to read the papers before the conference. You can download them here: [http://bit.ly/SRTL11\\_Papers](http://bit.ly/SRTL11_Papers)

## PUBLICATION

We are negotiating with *Mathematical Thinking and Learning* for a special issue.



## Travel in and Around Los Angeles

Los Angeles is bigger than you think. The city itself includes "only" 4 million people. But inside and around the city limits are 87 other independent cities (some, like Beverly Hills, completely surrounded by Los Angeles). If you include these other cities, then the area has about 12.8 million residents, making it the third largest metropolitan area in the world (behind Tokyo and New York). It is ethnically very diverse, with no single ethnic group holding a majority. The largest group is White, closely followed by Hispanic/Latino, followed by Asian, "Other", and African American. It is also diverse geographically. Within the city limits, the lowest elevation is 0 feet above sea level, and the highest is Mt. Lukens (5000 feet or 1547m). Also, the city is physically large, extending 44 miles longitudinally (71km) and 29 miles (47km) latitudinally. Within the greater metropolitan area, the highest mountain is Mt. San Antonio (usually referred to as Mt. Baldy) at 8600 ft (or 2600m).

## Crime and Safety

The areas we will be visiting are relatively safe, although in more crowded tourist areas, pickpockets are not unusual. As in any big city, be aware of your surroundings and try to blend in; do not carry or show expensive items or conspicuously consult maps. Homelessness is an epidemic in Los Angeles, and if you are walking about you may come across homeless encampments, which should be avoided.

<https://www.smartertravel.com/tips-los-angeles-warnings-dangers-stay-safe/>

## Climate

Average high temperature at the UCLA campus in July is about 77 degrees F (25 C), and average low is about 61F (16 C). Highest recorded July temperature is 103 F (39 C). Rain is rare and causes a near panicky euphoria in local residents. (Average precipitation is about 0.) Humidity levels tend to be relatively low. As we all know, things are heating up, and the last two July's have been somewhat warmer than the 77 degree average might lead you to believe.

Keep in mind that temperatures vary considerably throughout the Los Angeles area. Downtown (10 miles from campus) the average high is 82 F (28 C). In Pasadena (15 miles) the average high is 89 F (32 C). Santa Monica (3 miles away, and the location of an excursion), 71 F (22 C). Palm Springs (about 100 miles) the average high is 108 F (42 C).

While you will almost always be comfortable in shorts and short-sleeve shirt, you might want a pair of long pants and a sweater or sweatshirt for the evenings, particularly when we are on excursions near the beach.

## Tipping

The U.S. has a tipping culture. Tip a taxi driver approximately 10-20% of the total cost. If eating in a restaurant in which you sit at a table and a server takes your order and brings food, tip 15%-20%. Tips at places where you stand in line are not expected (even if there is a jar that says "tips".)

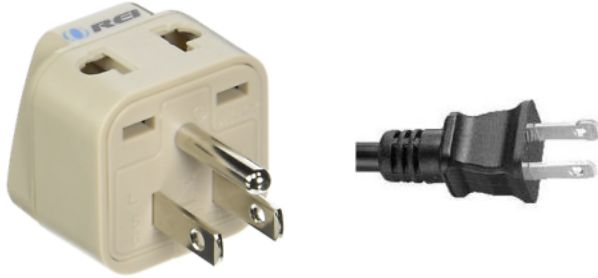


### Sales Tax

Prices quoted rarely include the sales tax. Sales taxes are levied by cities and states, and in Los Angeles sales taxes add up to approximately 10%.

### Electricity:

The U.S. operates on a 120V supply voltage at 60Hz. There are two plug types. Type A has two flat pins and Type B has three pins.



### Hotels Before or After SRTL

Los Angeles is a large, diverse city, and the mood of your visit can be adjusted by moving to a different neighborhood. L.A. is hard to see without a car: it is very spread out and has only a minimal public transportation system. For this reason, it is good to look for hotels in areas with plenty of sites and activities within walking distance or a short taxi ride away.

UCLA is relatively close to LAX. If you are willing to pay roughly \$60 USD for a taxi, you can be at UCLA in about 20 -30 minutes, depending on the traffic.

### Near LAX

If arriving early, it is convenient to stay near LAX. There are hotels in all price ranges, and many, if not all, have free shuttles from the airport. However, this area lacks charm (to put it mildly), and if you go outside of your hotel you will be greeted with a view of concrete as far as the eye can see. This is not an issue if you simply want a place to stay, but be aware that there is nothing of interest within walking distance of most airport hotels. If you stay at an airport hotel, we may ask that you return to a central meeting point at the airport when it is time for transportation to the conference site.

One exception to this is the Custom Hotel, <https://www.customhotel.com>, a small “boutique hotel” that is relatively low-budget and in a residential neighborhood. The beach is a short car ride away.



If you are willing to pay the taxi fare and have a larger budget, you might consider staying closer to the conference site:

### Lodging Near UCLA

For the most part, the best strategy is to use whatever procedures you usually use to find hotels (Expedia, Kayak, etc.), but please feel free to run them past us; we can give you advice on the neighborhood, location to other things, etc.

With that said, there are a few hotels in near the UCLA campus that visitors have stayed before with positive comments. Hotels near UCLA tend to be expensive. All are within walking distance of the campus.

The prices I quote are based on listed prices in February. They are likely to be higher in July.

- **Luskin Center:** an on-campus hotel with rates around \$210/night. If space is available, we can make a reservation for you and this might save 5%.
- **Hotel Angeleno:** nice hotel with wonderful view from the restaurant. The hotel is surrounded by busy roads and highways which make walking hard. (Rooms are quiet, though.) About a 20-minute hilly walk to UCLA campus. Free shuttle to campus. We often put guest speakers here. About \$160/night. [www.hotelangeleno.com](http://www.hotelangeleno.com).
- **Hilgard House:** comfortable, no frills, nice. We often put guest speakers here. Very close to campus. Roughly \$220/night. [www.hilgardhousehotel.com](http://www.hilgardhousehotel.com)
- **W Los Angeles -West Beverly Hills.** Nice, trendy. Essentially across the street from campus. Roughly \$260/night. There are several W hotels in Los Angeles. So make sure you have the right one.
- **Kimpton Hotel Palomar Los Angeles Beverly Hills:** trendy, upscale. An easy 15 minute walk to campus. On a busy street, but plenty to see/do within walking distance. About \$190/night.
- **Good Nite Inn West Los Angeles-Century City.** Very simple, on a busy street. They've recently remodeled and revamped, and I'm not sure how things have changed. About \$150/night. NOT within walking distance (about 3 miles away.)
- **PaliHotel Westwood Village.** Very new, but a very convenient location. <https://www.palisociety.com/hotels/westwood-village/> Roughly \$190/night

### Car Rentals

Several car rental companies serve LAX. The companies are off-site, which means that you will need to take a short (5 minute) shuttle ride from the airport to the company. You must book your rental through the company's website before your arrival or they might not have cars available. Avis, Budget, Enterprise, Hertz, National, Thrifty

### Entertainment and Site Seeing

The International Collaboration for Research on

STATISTICAL REASONING, THINKING AND LITERACY

SRTL



If you're interested in planning some time in or around Los Angeles before or after SRTL, we'd be happy to answer any questions. L.A. is a city of neighborhoods, and so even if you've done the "greatest hits" on previous visits, you might enjoy staying in particular neighborhoods.

### **Greatest Hits**

**Disneyland:** about 50 miles from UCLA. Generally open from 8am - midnight. Tickets can be purchased on site or advance on their website. There are two parks. Disneyland is the classic park, and California Adventure a newer park. Ticket prices vary by date and by park and range from roughly \$115-\$200. Multi-day passes are also available. If there is interest in attending the day after SRTL ends, let Rob know and we might see if we can arrange a group admission rate or a special tour.

**Universal Studios:** About 15 miles from UCLA. Technically speaking this is a movie studio, but what you pay for is entrance to an amusement park themed around Universal movies (including Harry Potter). Tickets are about \$120.

**Hollywood Bowl:** If you are a music lover, this is one of the great Los Angeles experiences. Pack a picnic, bring a bottle of wine, and enjoy while you listen to music under the stars. (You can buy everything you need on-site, but expect to pay more.) Concerts typically begin at 8pm, and the grounds open for picnics two hours before the concert. Tuesday and Thursdays are classical nights with the L.A. Philharmonic, and the cheapest seats are \$1 (the price climbs rather steeply from there). Jazz, Rock and other genres are considerably more expensive. The venue seats about 15,000 people, but even so, popular acts sell out, and so if you are interested, then you should buy tickets as soon as possible. (Luckily, we classical music lovers can be a bit more relaxed since classical rarely sells out, unless it is Beethoven and a relatively popular performance, such as Lang Lang or The Two Cellos or something of that ilk.)  
<https://www.hollywoodbowl.com/events/performances/>

**Los Angeles County Museum of Art and La Brea Tar Pits** (this may be under construction during your visit; exact dates of construction have yet to be announced.) The museum is great, but don't overlook the tar pits. Often, in summer afternoons, you can watch paleontologists digging up fossils in the excavation pits.

**Getty Museum Center and Getty Museum Villa.** The Center is 2 miles from campus and has a large, world-class art collection and beautiful grounds. We will provide a bus to the Center on Friday for a two hour visit. The Villa is along Pacific Coast Highway, about 10 miles to the north of UCLA, and houses Roman and Grecian antiquities in a recreation of a Pompeii villa. Both are free, but the Villa requires parking reservations, even if you are coming by bus or taxi. (Basically, they limit the number of admissions to prevent crowding).

### **Local Neighborhoods**



### Beverly Hills

Not cheap, but that's why you go. Hotels walking distance to shopping are pricey, but then so is the shopping. There are some periphery hotels that are less expensive. My sense is that BH is a nice place to spend 2-3 hours at most. There are some very nice restaurants in many price ranges though.

### West Hollywood

The center of rock-and-roll glamour on the north (Sunset Strip) and famous gay night-scene (with a historic role in LGBTQ civil rights) to the south (Santa Monica Blvd). Lots of good restaurants and pricey residential neighborhoods throughout.

### Santa Monica

We'll see one portion of this beachside city during our excursion, but this is a nice area to spend time in. There are less-touristy areas worth a visit as well. This is a good place to stay if you want to visit the Getty Villa or spend time at the beach.

### Pasadena

Count on the temperature in Pasadena being 10-15 degrees Fahrenheit warmer than at UCLA. Pasadena is one of the older cities in the Los Angeles area, and is host to the annual New Year's Day Rose Parade. There is a fun shopping/dining area (Old Town and, about 2 miles east of Old Town, Laker Street), beautiful early 20th century craftsman homes (the Gamble House is a famous example, and available for tours with advanced reservations), and two world-class museums: The Norton Simon and the Huntington Library. The Huntington in particular is one of the area's often overlooked gems. It's not really a library, but the former estate of a 19th century railroad baron who developed much of southern California. The gardens are extensive and beautiful, containing many rare plants and divided into sections: a cactus and succulent section, palm trees, jungle, chinese garden, japanese garden, rose garden, etc. A visit to the gardens alone can easily take 2-3 hours. The library itself is a research library, but has two rooms of rare books on display for the public. Finally, the original residence is now a museum specializing in English art. The most famous paintings are "Pinkie" and "Blue Boy" by Gainsborough.

The Norton Simon Museum has many paintings by artists throughout the world, with a strong showing of Picasso, van Gogh and Matisse

<https://www.huntington.org/>

[www.nortonsimon.org](http://www.nortonsimon.org)

### Venice Beach

A mixture of trust-fund bohemians, drug-addled hippies, free spirits, and homeless. The canals provide a pleasant walk. A stroll along the boardwalk takes you past many bizarre street entertaining, Muscle Beach, and other oddities (but watch your wallet and purse). Abbot Kinney Street has very high end shopping and dining.





### Downtown Los Angeles

Downtown has greatly changed, and can provide a very entertaining afternoon or two. Things are much quieter on the weekends, particularly Sunday, but there is always something worth seeing. Some highlights: Walt Disney Concert Hall (Frank Gehry design), Bradbury Building (stunning interior, quite famous in architectural circles and used in many, many movies including Blade Runner), Grand Central Market (informal and gourmet dining), Angels' Flight (the world's shortest railroad, or so they say), Union Station (another architectural delight), Olvera Street (center of the original Spanish settlement or, if not the center, at least all that's left), Little Tokyo (food and Japanese-inspired stores), "Arts District" (shopping, dining, art galleries), and China Town (much fallen since its glory days in the 1950s, but still worth a few minutes walking around. However, if it's good authentic Chinese food you want, then the San Gabriel Valley, about 20 miles east of downtown Los Angeles, will provide.)

### Hollywood

Hollywood is a vaguely defined neighborhood within Los Angeles. Ironically, there are few movie theaters here. Most visitors are disappointed: it is extremely touristy and somewhat seedy and rundown. There are some stylish hotels and nightclubs if that's your taste.

### Odds and Ends

It's often fun to see a movie at one of these theaters:

- TCL "Chinese" Theater on Hollywood Boulevard: classic movie theater from the 1920's. Movie stars, when they reached a level of success, were invited to leave their footprints and handprints in the concrete in the courtyard (and still do). Drawbacks: many tourists, and in the heart of downtown Hollywood (which is actually quite seedy and somewhat tacky).
- El Capitan Theater on Hollywood Blvd: Another classic movie theater from the same era as the "Chinese" and equally grand. Just a block away from the "Chinese". Shows only Disney movies, and includes an opening live-action show.
- Cinespia Movie Screenings at the Hollywood Forever Cemetery. Outdoor screenings of classic movies in a cemetery in which many celebrities from the "golden age" of Hollywood are buried. Come early, bring a picnic, sit on the lawn. The schedule is usually announced in April and screenings are usually Friday and Saturday nights.  
[www.cinespia.org](http://www.cinespia.org).
- Hollywood Arclight Cinerama Dome. On Sunset Blvd in the heart of Hollywood. Another "classic" theater from the 1950's. The entire Arclight complex, which includes other modern theaters, is quite classy and has state-of-the-art systems. The audiences here tend to be very knowledgeable about films, and will stay through the closing credits to see if their name is there. I have myself spotted several celebrities in the audience from time to time. There is a decent cafe and bar on the premises.
- Old Town Music Hall. Theater from the 1920's that shows classic silent movies with pipe organ ("The Might Wurlitzer") accompaniment.



Hiking: There are many excellent day-hikes around Los Angeles, some a short drive from UCLA. Most are quite steep but quickly get you away from civilization and offer wonderful views. Trails are not considered safe by yourself in early morning/evening due to mountain lions and rattlesnakes, but two or more people are enough to scare away the lions, and some basic cautions will keep you clear from (relatively rare) rattlesnakes. See <https://www.lamag.com/culturefiles/50-essential-hiking-trails-los-angeles/>

Griffith Observatory <http://griffithobservatory.org/> is a museum and observatory with wonderful views and nice science exhibits. Made famous from the James Dean movie *Rebel Without a Cause*. (Incidentally, Dean was a UCLA student.)

Museum of Jurassic Technology. One of the oddest places in Los Angeles. Is it a museum? Is it an art project? Is it a carnival amusement? Are the exhibits real? Do the people working there believe they are real? AFTER your visit you should read Mr. Wilson's Cabinet of Wonder: Pronged Ants, Horned Humans, Mice on Toast, and Other Marvels of Jurassic Technology, by Lawrence Weschler. Reading it before your visit may spoil some of the disorientation you feel after your first visit. The chief curator of the Museum won a MacArthur "Genius" grant for his efforts, but that bit of knowledge makes everything even more confusing.

### **Trips Further afield**

If you are in the mood for an overnight local trip, here are some ideas:

Palm Springs: about a 2 hour drive from UCLA. It will be very, very hot (expect at least 100 F and probably 110-115).

Santa Barbara: about 90 minutes drive from UCLA. You can also take the train, but must catch it downtown Los Angeles. The train trip is about 2 hours. Lovely, California-Spanish beachside city. Great food and wine, lovely beaches, beautiful mountains. Wineries with tasting rooms are another 45 minutes or so to the north of Santa Barbara in Los Olivos, Buelton, and surrounding farming cities.

San Luis Obispo, Los Osos, Moro Bay, Cambria, Paso Robles: more wine tasting, about a 3 hour drive north of UCLA. Beautiful, sparse coast line with many protected natural preserves. The coast (Moro Bay, Los Osos) can be quite cool even in July (mid-50s), while inland (Paso Robles, San Luis Obispo) it can be over 100 degrees. San Luis Obispo is a college town and, like Santa Barbara, a Spanish mission town with the mission still intact. Cambria hosts Hearst Castle, William Randolph Hearst's fantasy home that partially inspired Orson Well's *Citizen Kane*. Requires reservations.

San Francisco: about a 5 hour drive on the hot, boring route, or an 8-hour drive on the coastal route (or a 15 hour drive on the extremely scenic Pacific Coast Highway Route). About a 60 minute flight from LAX and other local airports. Flights roughly every 90 minutes for most airlines.

### **Reading**



- The Library Book, Susan Orlean. History of the Los Angeles library, including the mystery surrounding a catastrophic fire in the 1980's, and from their, launching on a history of Los Angeles and the role of libraries around the world.
- The Big Sleep, Raymond Chandler. Classic detective novel.
- The Black Dahlia, James Elroy. Real-life crime.
- Cadillac Desert, Marc Reisner. The Story of water in the western U.S. and therefore the modern history of Los Angeles.
- City of Quartz, Mike Davis. Cultural and social history of Los Angeles.
- Counter Intelligence: Where to Eat in the Real Los Angeles. Jonathan Gold. L.A. is a foodie town, and this is the bible.
- LAitudes: An Angeleno's Atlas, ed. Patricia Wakida. About maps and data! Some of the chapters written by UCLA graduates of the data/visual arts program.
- Los Angeles: The Architecture of Four Ecologies, Renner Banham. Classic and essential overview of architectural and social trends and patterns in Los Angeles.
- West of Eden, Jean Stein. A gossipy, first-person spoken history of the glamorous side of Los Angeles, as transcribed by the daughter of Hollywood aristocracy. (Her father, Jules Stein, founded the largest and most successful talent agency, and so she personally knew many stars and artists.)
- The Rest is Noise, Alex Ross. Strictly speaking, a history of 20th century music. But a big part of that history was the migration of musicians and composers from Europe to the West Coast and Los Angeles before and during the Second World War. For this reason, there's quite a bit about Los Angeles cultural history.

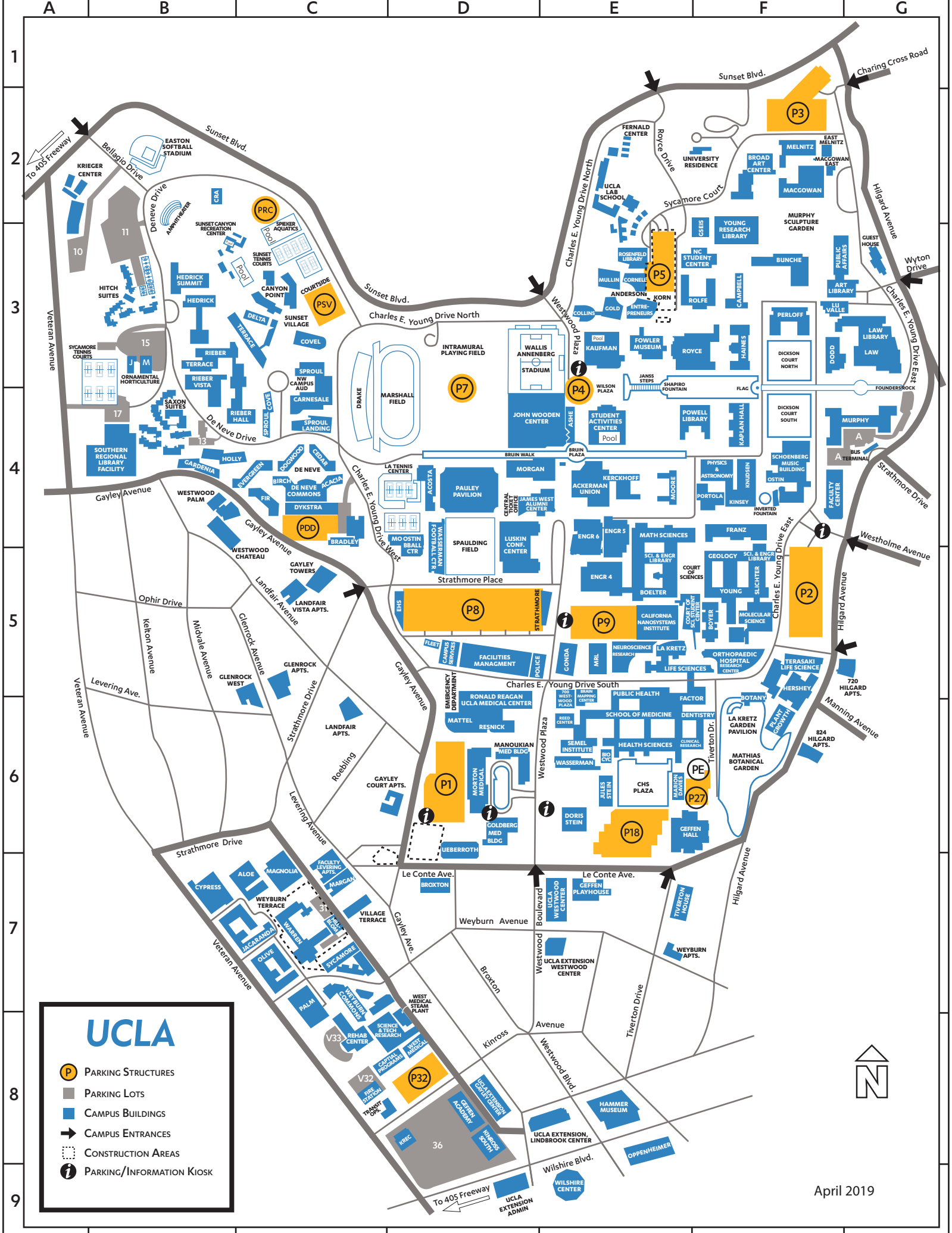
### Watching

- Blade Runner. It's set in Los Angeles. Did you know that? (And, of course, its sequel Blade Runner 2049.)
- L.A. Story, with Steve Martin.
- L.A. Confidential.
- Chinatown.
- Sunset Boulevard (the fictional location is just around the corner from the dorms we'll be staying at!)
- Mulholland Drive. It made no sense to me at all, but friends of mine "In the industry" swear that this is the most realistic portrayal of the darker sides of Hollywood that they've seen.
- Swingers.
- Repo Man. A cult classic.
- The Player.
- Los Angeles Plays Itself. This is actually a documentary about movies in which Los Angeles is prominently featured. Along the way you learn lots of L.A. history.
- Who Framed Roger Rabbit? Set in a fantasy Los Angeles in which cartoon characters are real and live a segregated life in "Toon Town". But this is used to tell the history of racial



tension in Los Angeles, and the popular story of how the beloved "Red Car" street cars were destroyed to make way for the automobile.

- The Loved One. A movie based on the Evelyn Waugh novel about a corrupt cemetery in Los Angeles.
- The Wizard of Oz. Not set in Los Angeles (but in Kansas and, well, Oz). But filmed at the studios we will be touring.
- La-la Land. A musical.
- Rebel Without A Cause
- White Men Can't Jump



# UCLA

- P PARKING STRUCTURES
- PARKING LOTS
- CAMPUS BUILDINGS
- ➔ CAMPUS ENTRANCES
- CONSTRUCTION AREAS
- i PARKING/INFORMATION KIOSK



April 2019

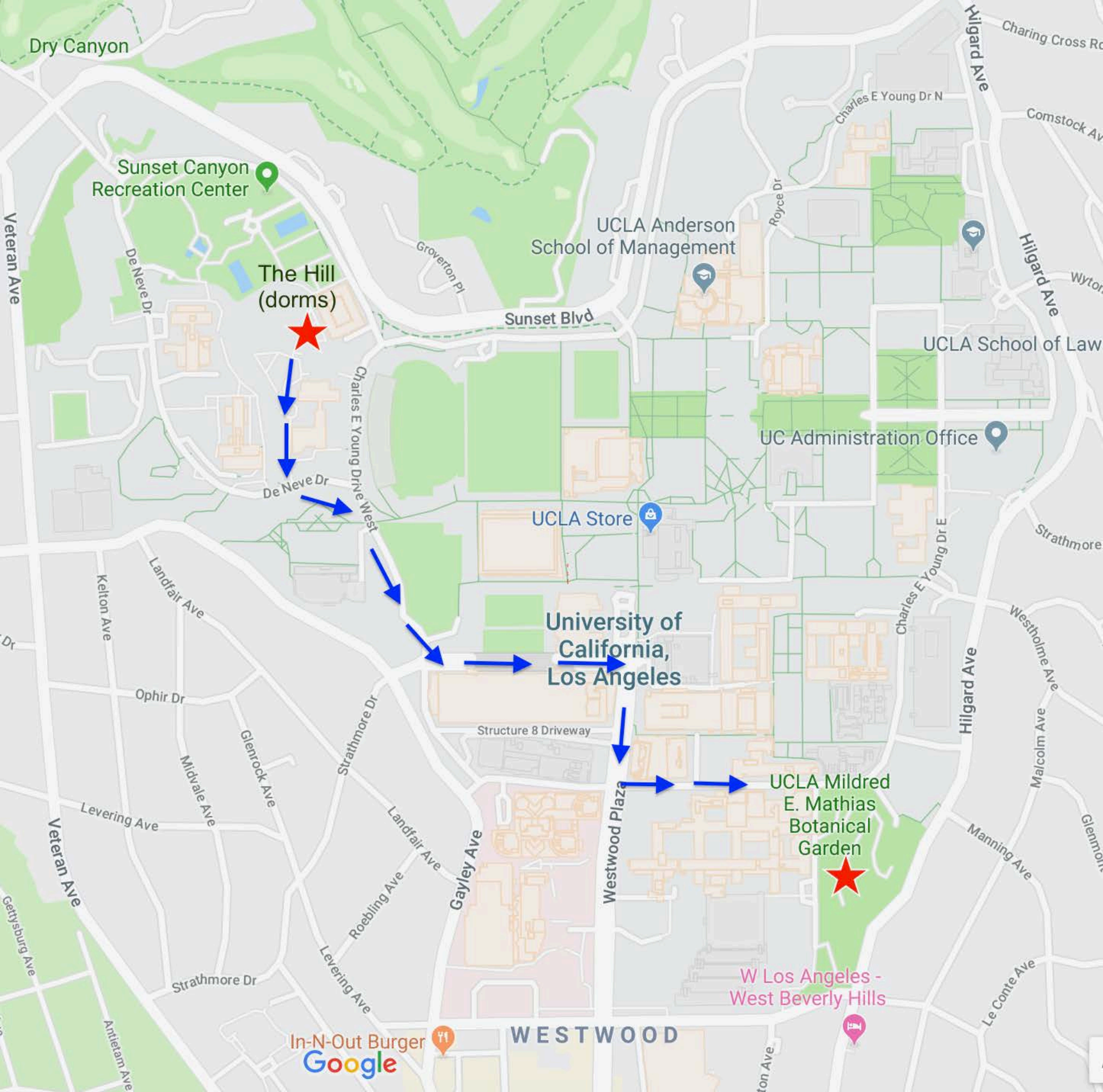
CAMPUS BUILDING	Grid	Delivery Address*
Ackerman Student Union	E4	308 Westwood Plaza
Acosta Training Center	D4	410 Charles E. Young Dr. West
Amphitheater	B2	
Anderson School of Management	E3	
Collins Executive Education Center	E3	110 Westwood Plaza
Cornell Hall	E3	110 Westwood Plaza
Entrepreneurs Hall	E3	110 Westwood Plaza
Korn Convocation Hall	E3	110 Westwood Plaza
Gold Hall	E3	110 Westwood Plaza
Mullin Management Commons	E3	110 Westwood Plaza
Rosenfeld Library	E3	110 Westwood Plaza
Ashe Center	E4	221 Westwood Plaza
Biomedical Cyclotron	E6	780 Westwood Plaza
Biomedical Sciences Research Bldg (BSRB)	F5	615 Charles E. Young Dr. South
Boelter Hall (Engineering II & III)	E5	580 Portola Plaza
Botany Bldg. (La Kretz)	F5	618 Charles E. Young Dr. South
Boyer Hall	F5	611 Charles E. Young Dr. East
Bradley International Hall	C4	417 Charles E. Young Dr. West
Brain Mapping	E5	660 Charles E. Young Dr. South
Brain Research Institute (BRI)	E6	670 Charles E. Young Dr. South
Broad Art Center	F2	240 Charles E. Young Dr. North
Broxton Plaza	D7	911 S. Broxton
Bunche Hall	F3	315 Portola Plaza
Campbell Hall	F3	335 Portola Plaza
Campus Services Bldg. I	D5	741 Charles E. Young Dr. South
Canyon Point (Sunset Village)	C3	200 DeNeve Dr.
Capital Programs Bldg.	D8	1060 Veteran Ave.
Carnesale Common	C4	251 Charles E. Young Dr. West
Center for Health Sciences (includes David Geffen School of Medicine)	E6	10833 LeConte Ave.
CHS Plaza	E6	
Central Ticket Office	D4	325 Westwood Plaza
Clinical Research	F6	700 Tiverton Ave.
CNSI Building	E5	570 Westwood Plaza
Court of Sciences Student Center	E5	617 Charles E. Young Dr. East
Courtside (Sunset Village)	C3	200 DeNeve Dr.
Covel Commons (Sunset Village)	C3	200 DeNeve Dr.
CRA Modular Units	B2	101 DeNeve Dr.
David Geffen School of Medicine	E6	10833 LeConte Ave.
Delta Terrace (Sunset Village)	C3	200 DeNeve Dr.
Dentistry, School of	F5	714 Tiverton Ave.
DeNeve Housing Complex	C4	
Acacia Residential Bldg.	C4	341 Charles E. Young Dr. West
Birch Residential Bldg.	C4	361 Charles E. Young Dr. West
Cedar Residential Bldg.	C4	301 Charles E. Young Dr. West
Dogwood Residential Bldg.	C4	321 Charles E. Young Dr. West
Evergreen Residential Bldg.	C4	331 Charles E. Young Dr. West
Figrove Residential Bldg.	C4	381 Charles E. Young Dr. West
Gardenia Residential Bldg.	B4	470 Gayley Ave.
Holly Residential Bldg.	B4	345 DeNeve Dr.
DeNeve Commons Bldg.	C4	351 Charles E. Young Dr. West
Dodd Hall	F3	390 Portola Plaza
Doris Stein Eye Research Center	E6	200 Stein Plaza
Drake Track & Field Stadium	C4	340 Charles E. Young Dr. North
Dykstra Hall	C4	401 Charles E. Young Dr. West
Easton Women's Softball Field	B2	100 DeNeve Dr.
EH&S Services Bldg.	D5	550 Charles E. Young Dr. West
Emergency Department	D3	757 Westwood Plaza
Engineering IV	E5	420 Westwood Plaza
Engineering V	E5	410 Westwood Plaza
Engineering VI	E4	404 Westwood Plaza
Facilities Management Bldg.	D5	731 Charles E. Young Dr. South
Factor Health Sciences Bldg.	F5	700 Tiverton Ave.
Faculty Center	F4	480 Charles E. Young Dr. East
Faculty Apartments-Gayley	C6	715 Gayley Ave.
Faculty Apartments-Levering	C7	827 Levering Ave.
Fernald Center	E2	320 Charles E. Young Dr. North
Fielding School of Public Health	E5	640 Charles E. Young Dr. South
Fire Station	C8	1090 Veteran Ave.
Fleet Services/Garage	D5	751 Charles E. Young Dr. South
Fowler Museum (Cultural History)	E3	308 Charles E. Young Dr. North
Franz Hall	F4	502 Portola Plaza
Gayley Towers	C5	565 Gayley Ave.
Geffen Academy	D8	11000 Kinross Ave.
Geffen Hall	F6	885 Tiverton Dr.
Geffen Playhouse	E7	10886 LeConte Ave.
Geology Bldg.	F5	595 Charles E. Young Dr. East
Glenrock Apartments	C5	558 Glenrock Ave.
Glenrock West	C5	555 Glenrock Ave.
Goldberg Medical Building	D6	300 Medical Plaza
Gonda (Goldschmeid) Center	E5	695 Charles E. Young Dr. South
Graduate School of Education & Information Studies (GSE&IS)	E3	290 Charles E. Young Dr. North
Haines Hall	F3	375 Portola Plaza
Hammer Museum	E8	10889 Wilshire Blvd.
Hedrick Hall	B3	250 DeNeve Dr.
Hedrick Summit	B3	240 DeNeve Dr.
Hershey Hall	F5	612 Charles E. Young Dr. East
Hillblom Islet Research Center	C7	900 Weyburn Place North
720 Hilgard Apartments	G5	720 Hilgard Ave.
824 Hilgard Apartments	F6	824 Hilgard Ave.
Hilgard Bus Terminal	G4	403 Hilgard Ave.
Hitch Residential Suites	B3	245 DeNeve Dr.
Intramural Field	D4	
Jules Stein Eye Institute	E6	100 Stein Plaza
Kaplan Hall (Humanities)	F4	415 Portola Plaza
Kaufman Hall	E3	120 Westwood Plaza
Kerckhoff Hall	E4	308 Westwood Plaza
Kinross Recreation Center	D8	11100 Kinross Ave.
Kinross South	D8	11020 Kinross Ave.
Knudsen Hall	F4	475 Portola Plaza
Krieger Child Care Center	A2	101 Bellagio Dr.
La Kretz Hall	E5	619 Charles E. Young Dr. East
Law, School of	G3	385 Charles E. Young Dr. East
Landfair Apartments	C5	625 Landfair Ave.
Landfair Vista	C5	510 Landfair Ave.
Life Sciences Bldg.	E5	621 Charles E. Young Dr. South
Los Angeles Tennis Center (Straus Stadium)	D4	420 Charles E. Young Dr. West
Luskin Conference Center	D4	425 Westwood Plaza
Luskin School of Public Affairs	F3	337 Charles E. Young Dr. East
Lu Valle Commons	F3	398 Portola Plaza
MacDonald Medical Research Labs (MRL)	E5	675 Charles E. Young Dr. South
Macgowan Hall	F2	245 Charles E. Young Dr. East
Macgowan East	F2	243 Charles E. Young Dr. East
Manoukian Medical Building	D6	100 Medical Plaza
Margan Apartments	C7	885 Levering Ave.
Marion Davies Children's Center	E6	805 Tiverton Ave.
Mathematical Sciences Bldg.	E4	520 Portola Plaza
Mattel Children's Hospital	D6	757 Westwood Plaza
Melnitz Hall	F2	235 Charles E. Young Dr. East
Melnitz East	F2	235 Charles E. Young Dr. East
Mo Ostin Basketball Center	D4	440 Charles E. Young Dr. West

CAMPUS BUILDING	Grid	Delivery Address*
Molecular Sciences Bldg.	F5	609 Charles E. Young Dr. East
Moore Hall	E4	457 Portola Plaza
Morgan Intercollegiate Athletics Center	D4	301½ Westwood Plaza
Morton Medical Bldg (MP200)	D6	200 Medical Plaza
Murphy Hall	F4	410 Charles E. Young Dr. East
Neuroscience Research Bldg.	E5	635 Charles E. Young Dr. South
North Campus Student Center	E3	295 Charles E. Young Dr. North
Northwest Campus Auditorium	C4	200 DeNeve Dr.
Occupational Health Facility	E6	67-120 Center for Health Sciences
Ornamental Horticulture Bldg. "J"	B3	267 DeNeve Dr.
Ornamental Horticulture Bldg. "M"	B3	265 DeNeve Dr.
Orthopaedic Hospital Research Center (OHRC)	F5	615 Charles E. Young Dr., South
Oppenheimer Tower	E8	10880 Wilshire Blvd.
Ostin Music Center	F4	445 Charles E. Young Dr. East
Pauley Pavilion	D4	301 Westwood Plaza
Perloff Hall	F3	365 Portola Plaza
Physics & Astronomy Bldg. (PAB)	F4	430 Portola Plaza
Plant Growth Center	F5	614 Charles E. Young Dr. South
Police Station	D5	601 Westwood Plaza
Portola Plaza Building	F4	460 Portola Plaza
Powell Library	E4	10740 Dickson Plaza
Public Affairs - see Luskin School; Public Health - see Fielding School		
Public Affairs Building	F3	337 Charles E. Young Dr. East
Reed Neurological Research Center	E6	710 Westwood Plaza
Rehabilitation Center	C8	1000 Veteran Ave.
Resnick Neuropsychiatric Hospital	D6	150 UCLA Medical Plaza
Rieber Hall	C4	310 DeNeve Dr.
Rieber Terrace	B3	270 DeNeve Dr.
Rieber Vista	B4	280 DeNeve Dr.
Rolfe Hall	E3	345 Portola Plaza
Ronald Reagan UCLA Medical Center	D6	757 Westwood Plaza
Royce Hall	E3	10745 Dickson Plaza
Saxon Residential Suites	B4	325 DeNeve Dr.
Schoenberg Music Bldg.	F4	445 Charles E. Young Dr. East
Science & Technology Research Bldg. (STRB)	C8	1040 Veteran Ave.
Semel Institute	E6	760 Westwood Plaza
Slichter Hall	F5	603 Charles E. Young Dr. East
Southern Regional Library Facility (SRLF)	B4	305 DeNeve Dr.
Spieker Aquatics Center	C3	114 Easton Dr.
Sproul Cove and Sproul Landing	C4	330 & 380 DeNeve Dr.
Sproul Hall	C3	350 DeNeve Dr.
Strathmore Building	E5	501 - 555 Westwood Plaza
Student Activities Center (SAC)	E4	220 Westwood Plaza
Sunset Canyon Recreation Center	C3	111 Easton Dr.
Terasaki Life Sciences Building	F5	610 Charles E. Young Dr. East
Tiverton Patient Family Guest House	E7	900 Tiverton Ave.
Transit Operations Maintenance Yard	C8	11075 Kinross Ave.
UCLA Extension (UNEX) Admin	D8	10960 Wilshire Blvd. 16/17th Floor
UCLA Extension Lindbrook Center	D8	10920 Lindbrook Dr.
UCLA Extension Gayley Center	D8	1145 Gayley Ave.
UCLA Guest House	G3	330 Charles E. Young Dr. East
UCLA Lab School (formerly UES)	E2	305 Sycamore Court
UCLA Westwood Center	E7	924 Westwood Blvd.
Ueberroth Bldg.	D6	10945 LeConte Ave.
University Residence	F2	10570 Sunset Blvd.
Village Terrace Apartments	C7	919-923 Levering Ave.
Wallis Annenberg Stadium	D3	
Warren Hall	C7	900 Weyburn Place North
Wasserman Building	E6	300 Stein Plaza
Wasserman Football Center	D4	430 Charles E. Young Dr. West
West Alumni Center	D4	325 Westwood Plaza
West Medical Bldg.	D8	1010 Veteran Ave.
West Medical Steam Plant	D8	1021 Weyburn Place South
Westwood Chateau Apts	C4	456 Landfair Ave.
Westwood Palm Apts	C4	475 Gayley Ave.
Weyburn Apts.	D7	10845-55 Weyburn Ave.
Weyburn Terrace Housing Complex	C7	
Aloe Court	C7	740 Weyburn Terrace
Cypress Court	B7	725 Weyburn Terrace
Jacaranda Court	C7	785 Weyburn Terrace
Magnolia Court	C7	765 Weyburn Terrace
Olive Court	C7	825 Weyburn Terrace
Palm Court	C7	945 Weyburn Terrace
Sycamore Court	C7	925 Weyburn Terrace
Weyburn Graduate Student Housing	C7	1020 Weyburn Drive
Wilshire Center	E9	10920 Wilshire Blvd.
Wooden Recreation and Sports Center	D4	221 Westwood Plaza
Young Hall	F5	607 Charles E. Young Dr. East
Young Research Library (YRL)	F2	280 Charles E. Young Dr. North
700 Westwood Plaza	E5	700 Westwood Plaza

PARKING STRUCTURES	Grid	Delivery Address*
Parking Structure 18	E6	820 Westwood Plaza
Parking - DD	C4	409 Charles E. Young Dr. West
Parking - Sunset Recreation	C2	115 Easton Dr.
Parking - Sunset Village	C3	200 DeNeve Dr.
Parking Structure 1	D6	100 Medical Plaza
Parking Structure 2	F5	602 Charles E. Young Dr. East
Parking Structure 3	F2	215 Charles E. Young Dr. North
Parking Structure 4	E4	221 Westwood Plaza
Parking Structure 5	E3	302 Sycamore Court
Parking Structure 7	D4	336 Charles E. Young Dr. North
Parking Structure 8	D5	555 Westwood Plaza
Parking Structure 9	E5	675 Charles E. Young Dr. South
Parking Structure 32	D8	1070 Veteran Ave.
Parking Structure E	F6	833 Tiverton Ave.
Parking Structure 27	F6	833 Tiverton Ave.

CAMPUS LIBRARIES	Grid	Delivery Address*
Arts Library	F2	1400 Public Affairs Bldg.
Biomedical Library (Louise M. Darling)	E6	CHS (Factor), rm. 12-077
College Library	E4	Powell Library
Law Library (Hugh & Hazel Darling)	G3	School of Law, rm. 1112
Management Lib. (Eugene & Maxine Rosenfeld)	E3	Rosenfeld Library (Anderson Complex)
Music Library	F4	Schoenberg Music Bldg., rm. 1102
Research Library (Charles E. Young)	F2	Young Research Library
Science & Engineering Library (SEL/) Engineering and Mathematical Sciences	E5	Boelter Hall, rm. 8270
Geology-Geophysics	F5	Geology, rm. 4697
Southern Regional Library	B4	Southern Regional Library Facility

OTHER CAMPUS LOCATIONS	Grid	Delivery Address*
Bruin Statue and Bruin Plaza	E4	La Kretz Garden Pavilion
Bruin Walk	C4 - E4	Marshall Field (in Drake Stadium)
Court of Philanthropy	E3 - E4	Mathias Botanical Garden
Court of Sciences	E5 - F5	Murphy Sculpture Garden
Dickson Court	F3 - F4	Shapiro Fountain
Flagpole	F3 - F4	Spaulding Field
Founder's Rock	G4	Sunset Tennis Courts
Inverted Fountain	E3	Sycamore Tennis Courts
Janis Steps	E3	Wilson Plaza
Kinsey Science Teaching Pavilion	F4	



Dry Canyon

Sunset Canyon Recreation Center

The Hill (dorms)

UCLA Anderson School of Management

Sunset Blvd

UCLA School of Law

UC Administration Office

UCLA Store

University of California, Los Angeles

UCLA Mildred E. Mathias Botanical Garden

W Los Angeles - West Beverly Hills

WESTWOOD

In-N-Out Burger  
Google



## WELCOME

- Stay on paths
- Pets allowed on leash
- Gates close at 5pm (4pm in winter)
- We are free to the public, consider making a donation online at: [botgard.ucla.edu](http://botgard.ucla.edu)